



# MONTHLY MEMBERSHIP PROGRESS REPORT

District 201Q1

Results as of: 5/31/2016

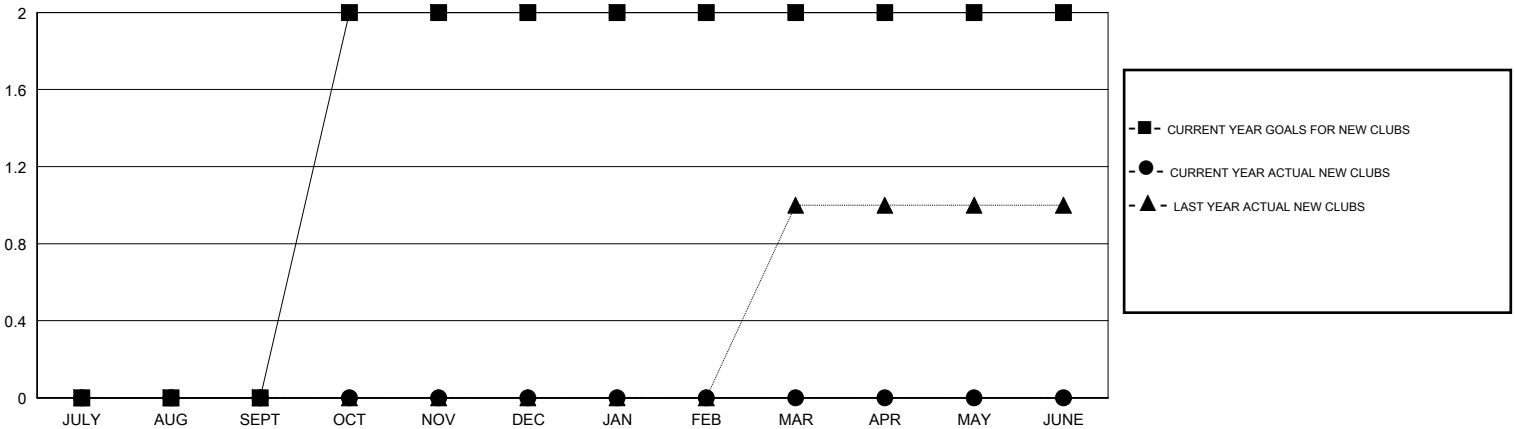
GMT: John Muller

LOCATION AUSTRALIA

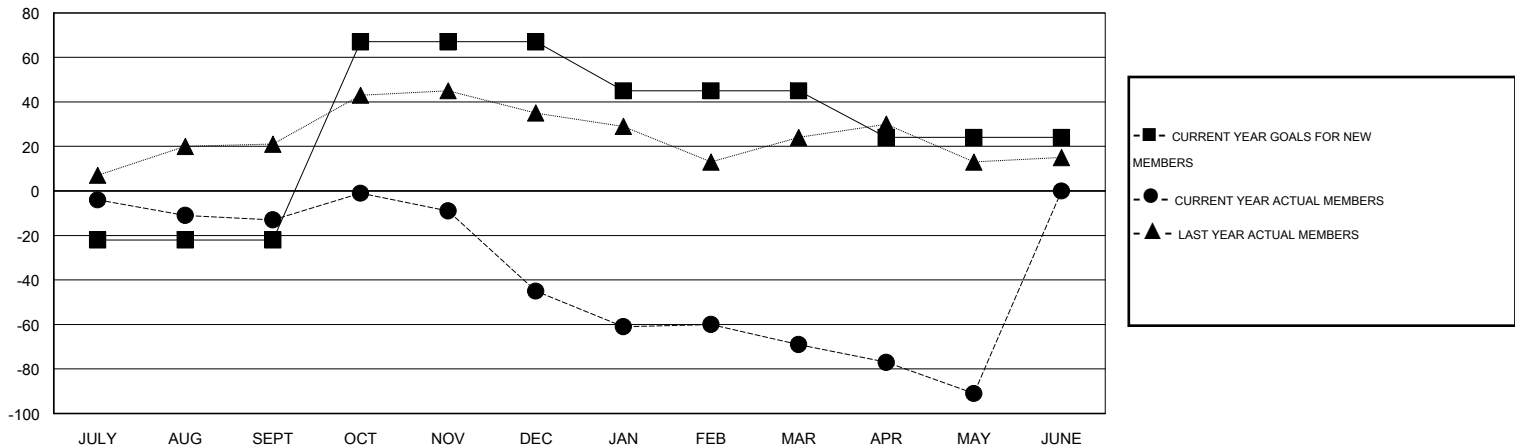
GMT CA 7

Clubs					Members				
RESULTS FOR 2015-2016					RESULTS FOR 2015-2016				
QUARTER	NEW CLUB GOAL	NEW CLUBS	DROPPED CLUBS	NET GAIN/LOSS	QUARTER	NEW MEMBER GOAL	CHARTER AND NEW MEMBERS ADDED	DROPPED MEMBERS	NET GAIN/LOSS
JULY/AUG/SEPT	0	0	0	0	JULY/AUG/SEPT	-22	56	69	-13
OCT/NOV/DEC	2	0	0	0	OCT/NOV/DEC	89	65	97	-32
JAN/FEB/MAR	0	0	0	0	JAN/FEB/MAR	-22	36	60	-24
APR/MAY/JUNE	0	0	1	-1	APR/MAY/JUNE	-21	36	58	-22

GOALS AND ACTUAL NEW CLUBS CUMULATIVE



GOALS AND ACTUAL MEMBERS CUMULATIVE



DROPPED CLUBS: 1	63 CLUBS OF 82 ADDED 1 OR MORE NEW MEMBERS	<u>GENDER DISTRIBUTION</u>	
		MALE	1,153 (60.75%)
<u>DROPPED MEMBERS</u>	<a href="#">CLICK HERE FOR HEALTH ASSESSMENT DATA</a>	FEMALE	745 (39.25%)
DECEASED		19	FAMILY UNIT MEMBERS
CLUB CANCELLED	0	HEAD OF HOUSEHOLD	203
OTHER	264	NON-HEAD OF HOUSEHOLD	209
<b>TOTAL</b>	<b>283</b>		